

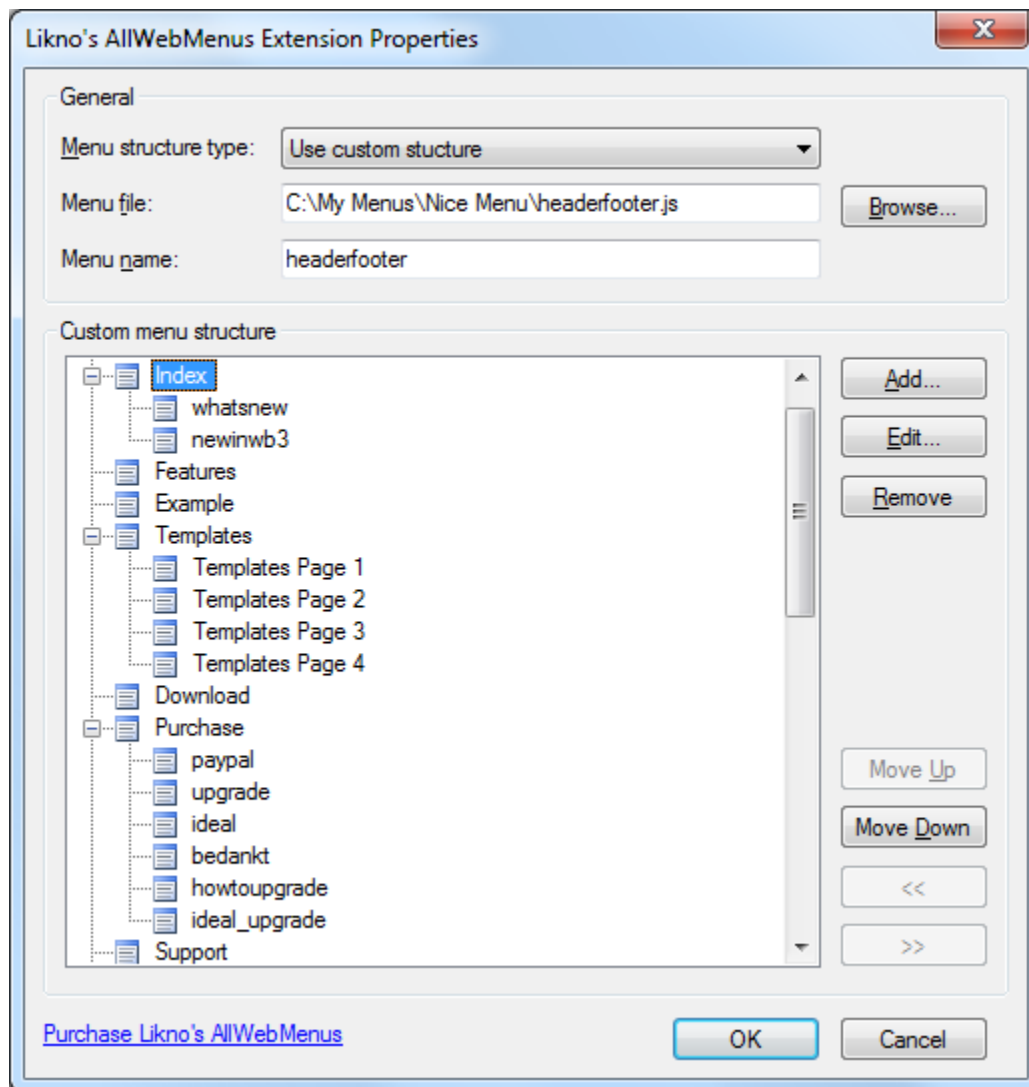
## AllWebMenus Extension - Version 1.0

The AllWebMenus extension provides an easy way to integrate Likno's AllwebMenus into your pages.

AllWebMenus is a DHTML menu/JavaScript menu builder to create any kind of popup or drop-down menu for your web navigation needs, without programming experience required. Use plenty of stylish themes to easily build SEO-friendly web menus, CSS menus, Sliding menus, Floating menus, Mega drop-down menus, AJAX menus etc. that work alike in all DHTML browsers (IE, Firefox, Mozilla, Safari, Chrome, Opera etc.) and all popular platforms (Win, Mac, Unix). Create pop-up, slide or drop-down menus with static or animated images, borders, effects, etc.

Visit the Likno website: <http://www.likno.com/>

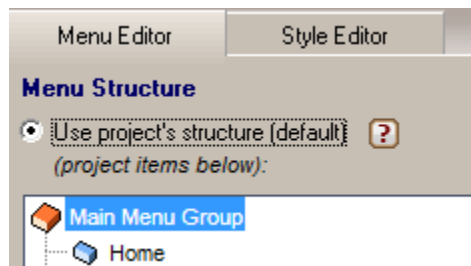
Now you can integrate these powerful menus in your Web Builder with only a few mouse clicks!



## Description of the properties

### Menu structure type

- **Use AllWebMenus project structure**  
This option will use the menu structure of your AllWebMenus project.  
Make sure you select '**Use project's structure**' in your AllWebMenu project.



- **Use Site Manager structure**  
This option will use the structure as you have designed it in the Web Builder site manager.

The menu structure settings of your AllWebMenus project should be set to: '**Use structure in web page (<UL><LI> items)**'.

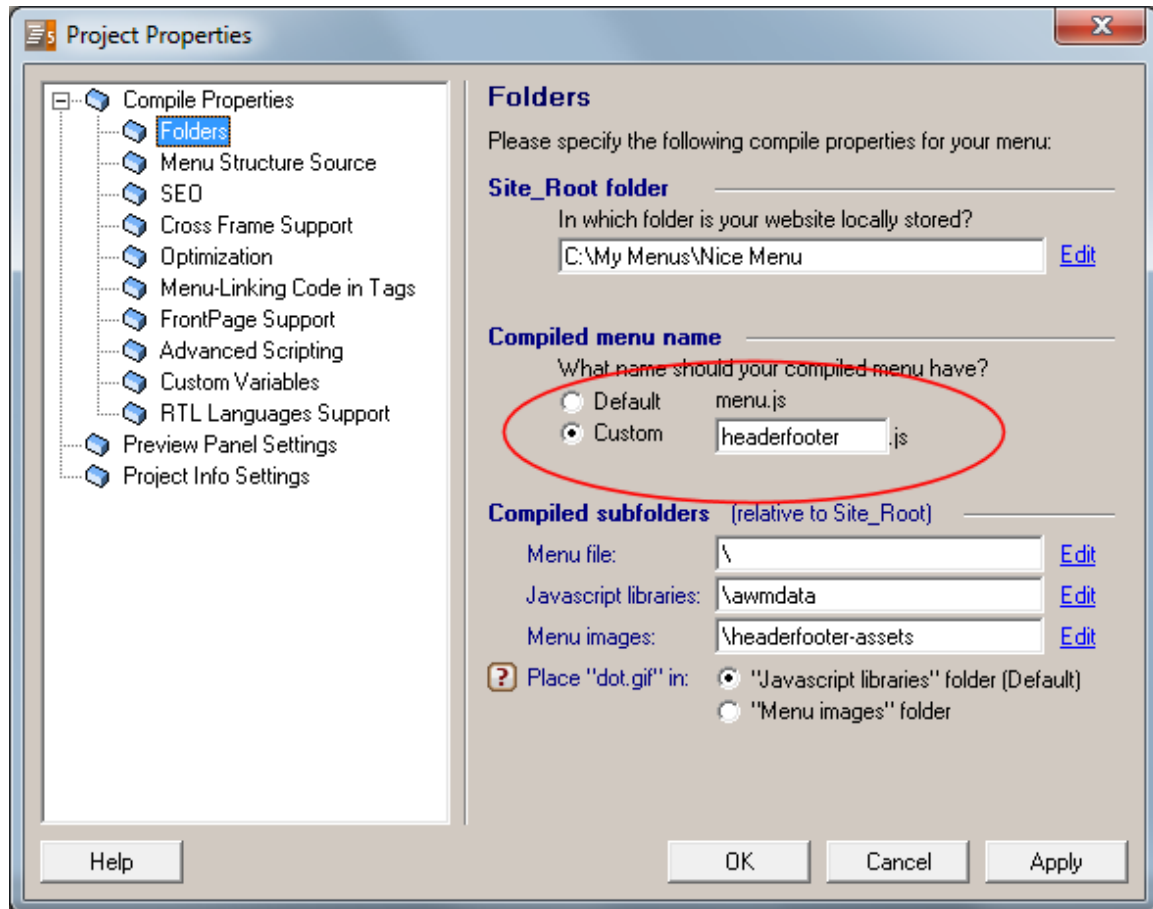


- **Use custom structure**  
This option will allow you to create the structure of the menu manually.  
The menu structure settings of your AllWebMenus project should be set to: '**Use structure in web page (<UL><LI> items)**'.

### Menu file

Specifies the menu JavaScript file of the compiled AllWebMenus menu as specified in the **Folders** properties of the project.

Note that WYSIWYG Web builder will automatically publish all other files in the same folder and subfolders of the specified JavaScript.



### Menu name

Specifies the name of the menu as configured in your AllWebMenu project.

## Recommended project properties for AllWebMenus

Make sure that **positioning** is set to 'Relative to an element' and the element Anchor-id starts with 'awmAnchor-'.

For example 'awmAnchor-headerfooter' where 'headerfooter' is the name of your menu.

**Automatically show Main Menu on page load**

Relative to Window     Relative to an Element     Relative to an Image


Your menu will appear relative to a SPAN, DIV, TD, P, or any other element in your page that contains the following ID in its tag:

Element Anchor ID:  
 Default ID:     
 Custom ID:

Note: Your menu will not appear if the Anchor ID specified above is not found in an element in your pages. The ID is "case-sensitive".

Element Anchor:    
Menu Anchor:    
Offset X:   px  
Offset Y:   px

   [Live Example](#)    [Help](#)



Note: Any browser-specific offset will be added to Offset X/Offset Y of the chosen positioning method

**Manually trigger Groups as popup menus** (advanced)   
(this method does not show Main Menu on page load)

[Click here to get the "ID" and "Trigger Code" for your Groups](#)

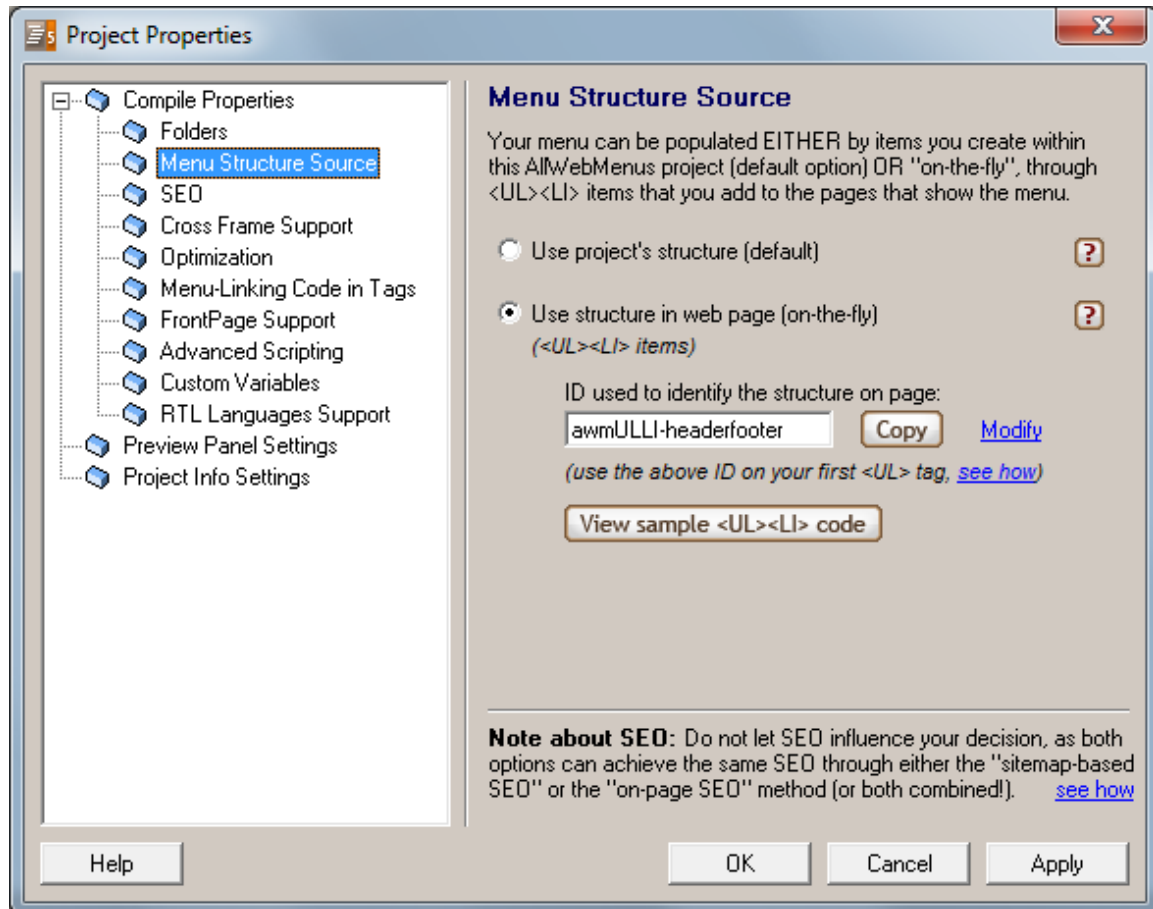
[Live Example](#)    [Help](#)

For positioning to take effect on your web page(s), please make sure that:

1. You [compile](#) your menu
2. You have your menu already [linked](#) to your page(s)

[Click here for detailed instructions on menu positioning](#)

If the Menu Structure type property of this extension is set to '**Use Site Manager structure**' or '**Use custom structure**' then you must also specify the ID used to identify the structure on page in the menu's properties.  
For example '**awmULLI-headerfooter**' where 'headerfooter' is your menu's name.



### **How to install this extension so it is available in WYSIWYG Web Builder?**

Copy all files from this zip file to the Web Builder folder. Usually this folder is called: C:\Program Files\WYSIWYG Web Builder 6\  
Next, restart WYSIWYG Web Builder; the extension should now be available in the Toolbox.

Alternatively you can use the Extension Manager to install this extension:  
Menu->Tools->Extension Manager.

### **Requirements**

Registered version of WYSIWYG Web Builder 6.5 or higher  
A license for Likno's AllWebMenu software.

This extension was created by Pablo Software Solutions with the help of Kees Versluis.  
Copyright 2010 Pablo Software Solutions  
<http://www.pablosoftwaresolutions.com>  
<http://www.wysiwygwebbuilder.com>